

ZK830 Single Scale PLU PC Database Software Package

Technical Specification



DESCRIPTION

PLU Lite is a dedicated PC database package that works alongside a single ZK830 to expand its PLU data storage capacity.

Harness the power, accuracy and strength of a ZK830, with the ability to easily store and recall over 100,000 piece weights.

PLU Lite allows the operator to easily set up and maintain a vast number of stored PLUs that can be held within the PC.

Any PLU that is selected from the PC is quickly transferred to the ZK830 scale to allow fast, accurate counting to take place.

This package allows the following information to be held and stored within the computer:

- ▶ Alphanumeric part numbers (up to 20 characters)
- ▶ Alphanumeric product description (up to 32 characters)
- ▶ Stored tare for the local base
- ▶ Stored tare for the remote base (if remote base is installed)
- ▶ Piece weight
- ▶ Upper and lower count limits for check counting applications

This simple-to-use database package displays PLU, piece counts and the gross or net weight on a PC, allowing data to be easily printed or transferred to other PC programs or spreadsheets.

Data selection made easy

With the ability to store large quantities of PLUs, PLU Lite comes with two basic auto search features to allow the operator to quickly search by part number or by product description.

With PLU Lite, operators can quickly search by part number, product description or by using an appropriate barcode scanner. Information about the part is displayed on the the PC screen and the piece weight data is transferred to the scale for accurate part counting.

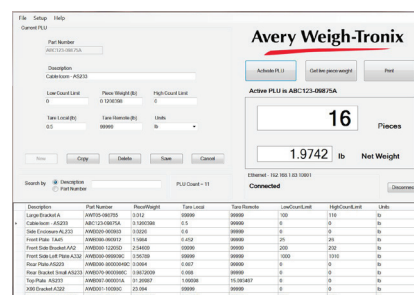
Piece weight accuracy

To guarantee the highest accuracy at all times, the piece weights stored within the database can be manually entered or updated using actual piece weight calculations taken from the ZK830.

With an already selected part, the ZK830 can carry out its re-sampling routine to calculate the new piece weight. This weight can then easily be transferred into the selected database area by hitting the 'retrieve active piece weight' key.

MAIN SCREEN FEATURES AND SETTINGS

Stored Data Fields	Alphanumeric part numbers up to (up to 20 characters) Alphanumeric product description (up to 32 characters) Stored tare for the local base Stored tare for the remote base Piece Weight (can be entered or calculated direct from the ZK830) Upper and Lower count limits ideal for check counting applications
Max Stored PLUs	100,000 PLUs
Tare Entry	Manual entry only, can only update the tares from within the database
Piece Weight Update	Can be updated within the database or extracted directly from the ZK830 to get a more accurate piece weight
Auto Search	Part number and description
PC Live Display Data	Displays live piece counts and Gross or Net weight for active base
Label Printing	Can be connected to any serial printer

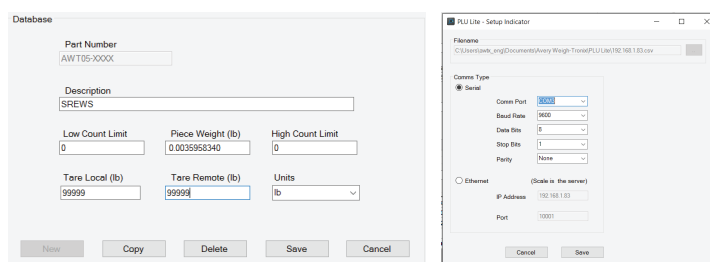


OPERATING SYSTEM AND COMMUNICATIONS

PC Requirements	Windows X64 compatible. Minimum 4GB RAM
Compatibility	Windows 7, Windows 8 and Windows 10
Scale Connections	Only one ZK830 can operate with this software package
Scale Communications	RS232 or Ethernet
Barcode Scanner	Serial or USB barcode scanner to connect through PC

DATA OUT

Print Data	One fully configurable print data string, allows easy communication to most label printers or just for data capture to other PC programs
Print String Formatting	Comes as standard with one basic printer label format for time, date count, gross, net and tare. Print format can easily be configured through software for custom print layouts or cut and pasted from Ztools print formatter
Database Transfer	The database can be easily transferred into Excel or CSV format for backup or for further data manipulation by other programs



Avery Weigh-Tronix

www.averyweigh-tronix.com

Avery Weigh-Tronix is an ITW company



Avery Weigh-Tronix is a trademark of the Illinois Tool Works group of companies whose ultimate parent company is Illinois Tool Works Inc ("Illinois Tool Works"). Copyright © 2018 Illinois Tool Works. All rights reserved. This publication is issued to provide outline information only and may not be regarded as a representation relating to the products or services concerned. This publication was correct at the time of going to print, however Avery Weigh-Tronix reserves the right to alter without notice the specification, design, price or conditions of supply of any product or service at any time.

PLU Lite Spec_501711.indd
V2 AWT35-501711